



Digital Telephones

Compatible with the Vodavi XTS Telephone System

- 8-Button Enhanced Speakerphone
- 8-Button Executive Speakerphone
- 30-Button Executive Speakerphone
- 30-Button Full Duplex Speakerphone
- Elite Large Screen Display Phone
- DSS Attendant Console
- The 2.4 GHz Wanderer

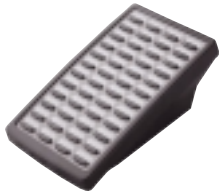
The XTS line of digital telephones consists of five desktop models along with a DSS attendant console and a 2.4 Ghz Wanderer handset. All five speakerphones are CTI capable, which enables your computer and telephone to work interactively for efficient call processing. They are also equipped with a standard 2.5mm headset jack.



8-Button Enhanced – With 6 fixed and 8 flexible feature buttons plus a fully integrated speakerphone, this phone covers all the basics.



8-Button Executive – Enjoy the benefits of an LCD display and 3 interactive softkeys in addition to the features of the 8-Button Enhanced Speakerphone.



DSS Attendant Console – Add a DSS console and achieve an additional 48 buttons to support an attendant or answering position.



30-Button Executive – Ideal for the widest variety of applications, this phone offers 12 fixed and 30 flexible feature buttons plus 3 interactive soft keys.



The 2.4 GHz Wanderer Cordless Handset – With many of the benefits of a Vodavi digital phone, The Wanderer adds mobility from 100 to over 250 feet with the accessibility of your desktop phone number and extension. The Wanderer range may vary based on environment

30-Button Full Duplex – With all the features of our 30-Button Executive Speakerphone and the addition of full duplex audio capability, this phone is great for the hands-free executive or the conference room.










Elite Large Screen Display – This telephone is our top-of-the-line business communications solution. This advanced and easy-to-use telephone is equipped with 12 fixed buttons and 30 flexible feature buttons. Additionally, the oversized 7x16 LCD display provides easy access to the interactive feature menu, which offers one-touch access to several commonly used features. These include Do Not Disturb, Last Number Redial, Voice Mail, Speed Dial, Directory and more.





Digital Telephones

							
	8-Button Enhanced	8-Button Executive	30-Button Executive	30-Button Full Duplex	Elite Large Screen Display	DSS Console	2.4 GHz Wanderer
Fixed Buttons	6	6	12	12	12		9
ON/OFF	▲	▲	▲	▲	▲		▲
HOLD	▲	▲	▲	▲	▲		▲
SPEED	▲	▲	▲	▲	▲		▲
CAMP ON			▲	▲	▲		
CONF (conference)			▲	▲	▲		▲
FLASH			▲	▲	▲		▲
FWD (forward)			▲	▲	▲		
MSG			▲	▲	▲		
MUTE	▲	▲	▲	▲	▲		▲
TRANS	▲	▲	▲	▲	▲		▲
HTP	program	program	▲	▲	▲		
VOLUME	toggle	toggle	toggle	toggle	toggle		up/down buttons
Feature Buttons	8	8	30	30	30	48	1
Interactive Soft Keys		3	3	3	13		
LCD Display		2x24	2x24	2x24	7x16		2x12
Red/Green LED Indicators	▲	▲	▲	▲	▲	▲	
Adjustable Ring Volume	▲	▲	▲	▲	▲		
Desk or Wall Mount	▲	▲	▲	▲	▲	▲	
Station Speed Dial Bins	20	20	20	20	20		20
Speed Dial Slide Out Directory					▲		
CTI Compatible	▲	▲	▲	▲			
Hot Keys	▲	▲	▲	▲	▲		
Charcoal Gray	▲	▲	▲	▲	▲	▲	▲
2.5mm Headset Jack		▲	▲	▲			▲
Full Duplex Speaker				▲			